

KES CABLE ENTRY

KES, KES-R

28650.6

KES-R 13/24, Snap On Cable Entry, Grey

- For cable diameters 3.2mm to 20.5mm
- Double Sealing to IP66
- Polyimide 6.6 Glass fibre reinforced core
- Hygienic design for wash down - Ecolab approved
- Integrated strain relief to EN62444



PRODUCT DESCRIPTION

The KES cable entry system allows unassembled cables, or pneumatic hoses to be quickly inserted into switchgear cabinets or machine housings without the use of tools.

The KES entry plates feature a dimensionally stable & ridged, elastomer-encapsulated glass fibre reinforced polyamide frame.

There are 3 different mounting options; external screw-on outer mount, internal screw mount using threaded bushes from the inside, or snap on without screws.

To insert the required number of cables, the surface membrane is first pierced with a small screwdriver. Then the unassembled cables, hoses or pipes can be easily pushed through the plate. The special construction of the double sealed conical grommets on the back of the plate provides IP66 sealing and reliable strain relief in accordance to DIN EN 62444.

With up to 32 cables per plate (with various diameters from 3.2 to 20.5 mm), the KES is ideal for confined spaces and achieves a significantly higher packaging density than conventional entry systems such as skin top glands.

The KES is designed to use the same mounting cut-outs as the standard 24-pin industrial connectors, such as Harting & Walther, so can be easily retro-fitted.

All variants are UL approved and available in grey or black, the polyamide core and the TPE membrane conform to UL 94 V-0 classification.

TECHNICAL DATA

GENERAL DATA

Type	KES-R
Mounting	Clip on
Colour	Grey
IP class	IP66
NEMA class	4x
Number of cables	13
Number of cables x cable diameter	10 x 3.2mm-6.3mm, 3 x 16.0mm-20.5mm
Length	149,6 mm
Width	58 mm
Installed height	14,5 mm

MOUNTING DETAILS

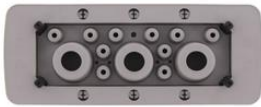
Wall thickness	1.5mm-2.0mm
Length of cutout	112 mm
Width of cutout	36 mm

MATERIALS

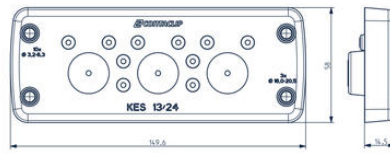
Material	Polyamide 6.6
Glass-fibre reinforced	Yes
Flammability class	V-0
Sealing material	TPE
Silicone-free	Yes
Halogen-free	Yes
Operating temperature from	-40 °C
Operating temperature to	90 °C

ADDITIONAL DATA

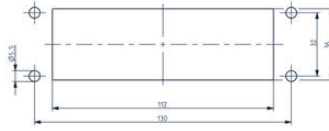
Tariff code	39259020
Country of origin	DE
Weight	112,9 g
Pack size	10



KES 13/24
10x Ø12 - 6.3mm
3x Ø16 - 20.5mm



Panel cut-out
for wall thickness
1.5 - 2 mm
(for snap-on attachment)



You can choose one of three attachment options to fit your requirements

1. Screw-on mount



The KES (without threaded bush) is screwed from the outside onto the housing wall.

2. Screw-on mount with threaded bushes and latching clips



Using the latching clips, the KES-CB latches onto the outside of the housing wall. It is then screwed on from the inside, through the housing wall, using the integrated threaded bushes.

3. Latched (snap-on) mount using latching hooks



The KES-R is latched from outside to the housing wall using the latching clips.